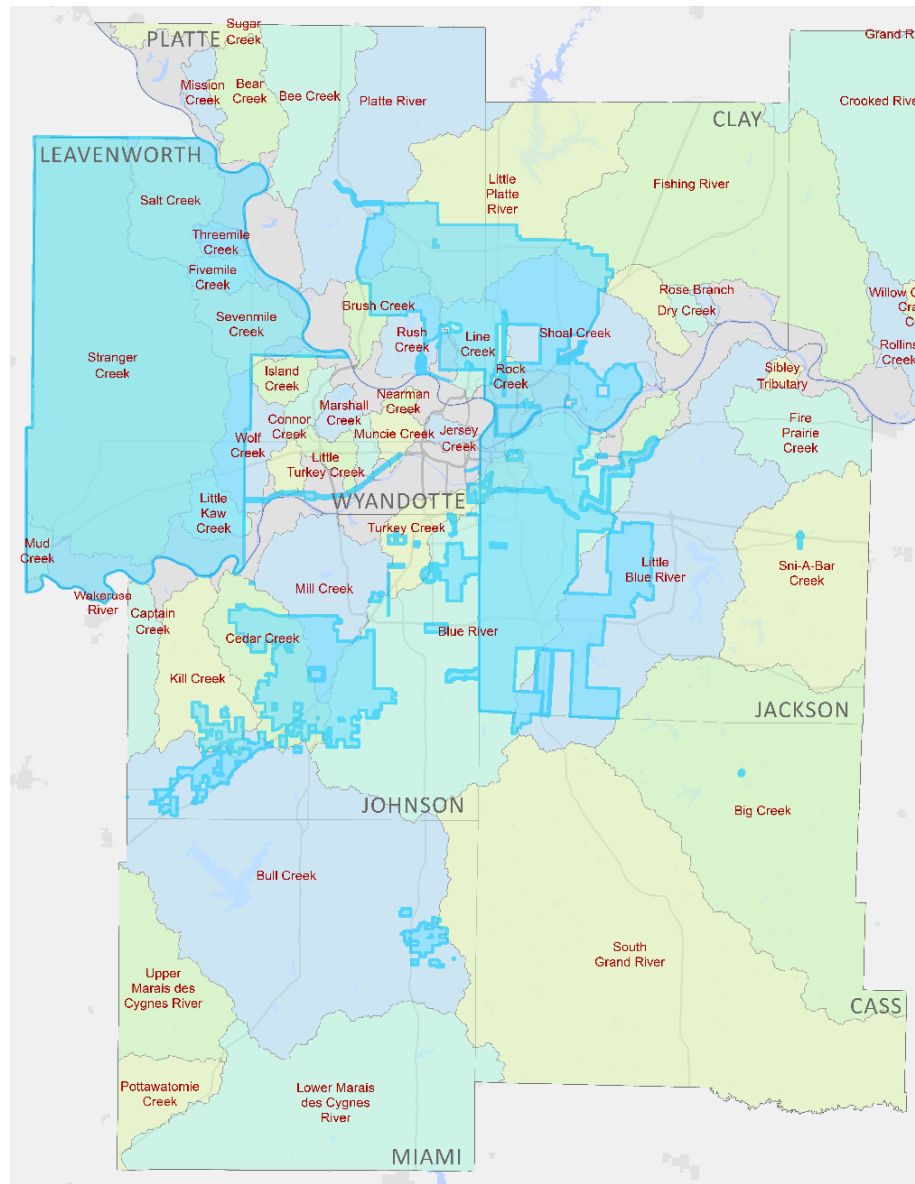
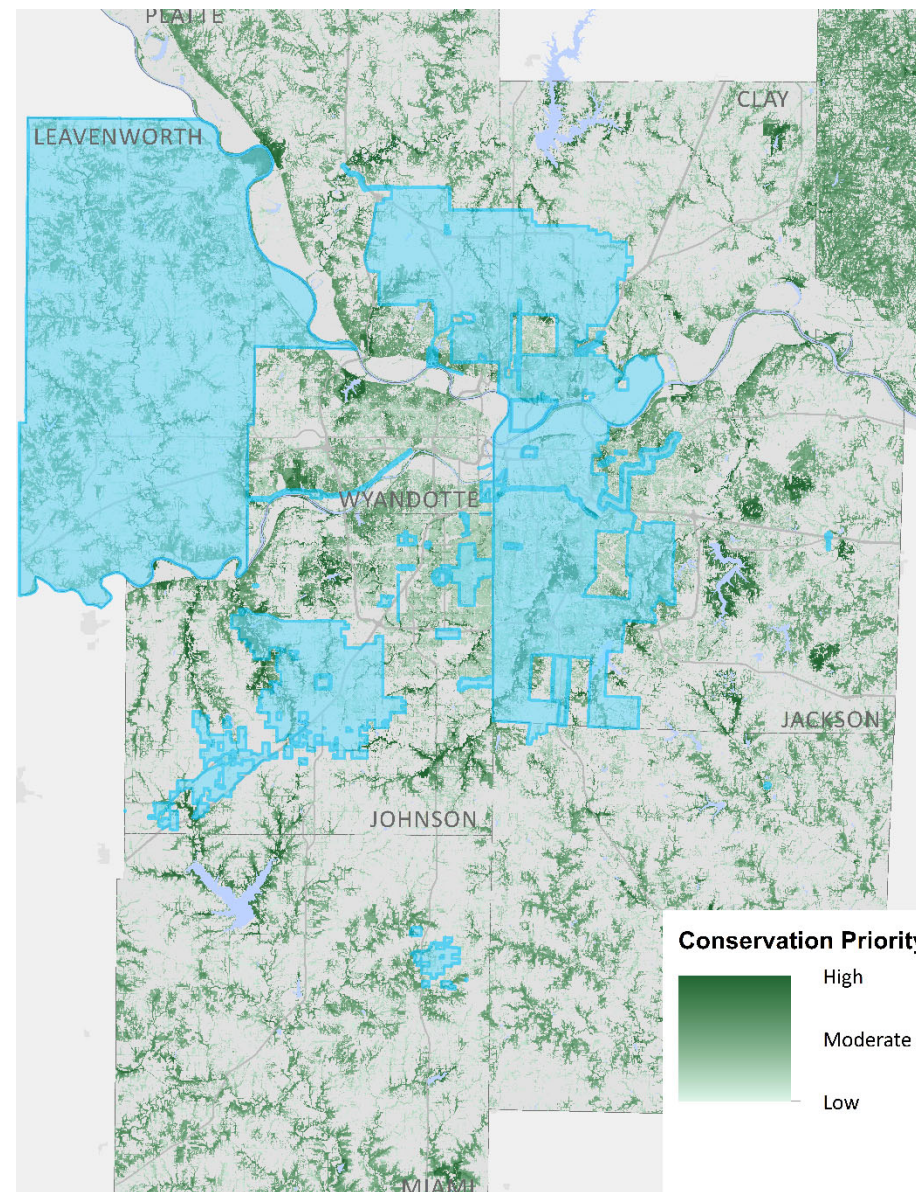


# Planning Sustainable Places Environmental Mapping

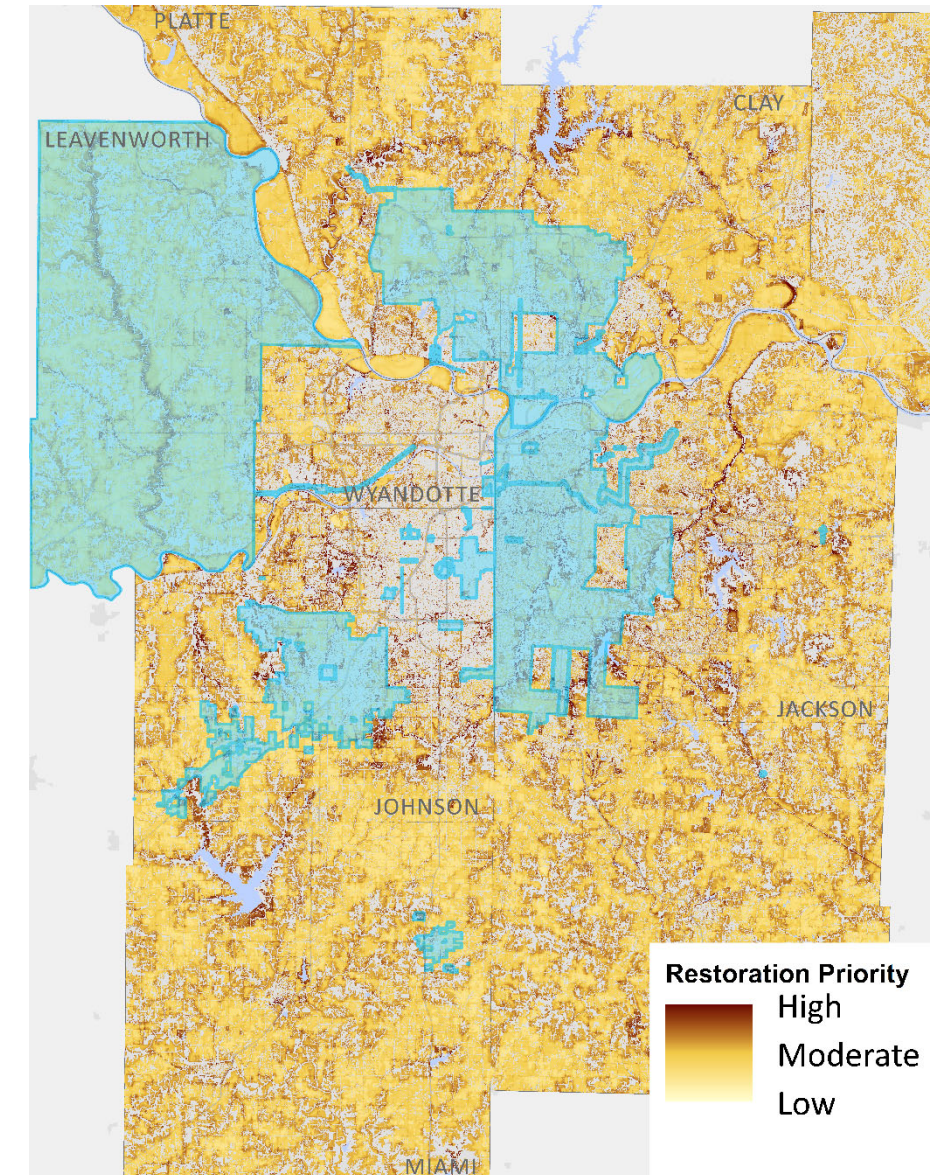
The 69 Planning Sustainable Places (PSP) projects from 2013, 2015, 2017 and 2019 are found in a variety of watersheds, and in forest conservation and restoration areas in the region. The shaded areas in blue note where projects have taken place. One project, the Wayfinding System Plan [2019] encompassed the whole 8-county region. It is counted as two projects due to its funding on both sides of the state line. It is not included in the calculations or lists below, which will take 67 projects into account.



Over half of the projects, 36 of the 67, occur within the Blue River watershed which crosses state lines and county boundaries. About 33%, 22 of 67, occur within the Turkey Creek watershed which is also fed by location on both sides of the state line and crosses county boundaries. Twelve percent, 8 of 67, occur within Mill Creek watershed in Johnson County. A detailed list of the projects and the impacted watershed are found on the following page.



This map shows the areas of conservation priority in the region, with darker green colors indicating higher priority. Most Planning Sustainable Places projects consist of areas of low to moderate priority. Many also include small areas of high conservation priority.



This map shows the areas of restoration priority in the region, which range from white as the lowest priority, to yellow as the moderate priority, to rust as the highest priority areas. While many PSP projects have small areas of high restoration priority, projects with smaller areas are often in urban, low-priority areas, whereas projects with larger areas include much more moderate- and high-priority restoration land.

# Planning Sustainable Places Environmental Mapping

Watershed [County, if needed]	Planning Sustainable Places Project [Year]
Betts Creek	Connecting Edwardsville [2013]
Big Creek	Pleasant Hill Downtown Revitalization Plan [2013]
Blue River	Waldo Streetscape – 75 <sup>th</sup> & Wornall [2015]
Blue River	Marlborough Catalyst Project [2013]
Blue River	Marlborough Village Placemaking [2015]
Blue River	Truman Green Gateway [2013]
Blue River	Truman & Winner Roads Commercial Node [2015]
Blue River	Englewood Arts District Circulation Plan [2013]
Blue River	135 <sup>th</sup> Street Community Plan [2013]
Blue River	135 <sup>th</sup> Street Implementation Plan [2015]
Blue River	Troost-Cleaver II Plan [2013]
Blue River	Implementing Structured Parking in Downtown Overland Park [2013]
Blue River	College & Metcalf Mobility Hub [2017]
Blue River	Swope Area – Prospect Connectivity Study [2017]
Blue River	75 <sup>th</sup> & Metcalf Transit and Pedestrian Access Improvement Plan [2017]
Blue River	Prairie Village – City Wide Bike/Ped Plan [2017]
Blue River	63 <sup>rd</sup> Street Corridor [2019]
Blue River, Mill Creek [Jackson], Missouri River, Little Blue River	Truman Connected [2019]
Blue River & Little Blue River	I-49/US-71 Sustainable Redevelopment Plan [2013]
Blue River & Sugar Creek	24 Highway Fairmount Business District Plan [2017]
Blue River & Turkey Creek	Invest Northeast [2013]
Blue River & Turkey Creek	Independence Avenue Zoning Overlay [2015]
Blue River & Turkey Creek	Independence Pedestrian Safety Improvements Study [2017]
Blue River & Turkey Creek	Truman Road Complete Street Redevelopment Plan [2017]
Blue River & Turkey Creek	Midtown Complete Streets Corridor Plan [2017]
Blue River & Turkey Creek	Gillham Road Corridor Bike Connections Plan [2017]
Blue River & Turkey Creek	Troost Avenue & Prospect Avenue ROW Enhancement Plans [2017]
Blue River & Turkey Creek	47 <sup>th</sup> Street Complete Street Evaluation [2017]
Blue River & Turkey Creek	An Event & Transportation Hub for Overland Park [2017]
Blue River & Turkey Creek	Cambridge Connector Feasibility Analysis [2017]
Blue River & Turkey Creek	Linwood Corridor Complete Street and Bikeway Connections [2019]
Blue River & Turkey Creek	Roe Boulevard and Johnson Drive Corridor Plan [2019]
Blue River & Turkey Creek	Woodland Plaza: Planning Equitable Transportation Investments in a Redeveloping Community [2019]
Blue River, Turkey Creek, Little Blue River, Platte River, Little Platte River, Brush Creek [Platte], Rush Creek, Line Creek, Shoal Creek, & Rock Creek	Trails Nexus Study & Ordinance [2017]

Watershed [County, if needed]	Planning Sustainable Places Project [Year]
Bull Creek	Downtown Louisburg Revitalization Plan [2013]
Bull Creek	Downtown Broadway Complete Street [2015]
Bull Creek	Downtown Edgerton Plan [2017]
Bull Creek, Cedar Creek & Mill Creek [Johnson]	Southwest Johnson County (Edgerton and Gardner Area) Transit Plan [2017]
Bull Creek & Mill Creek [Johnson]	Gardner Main Street Corridor Plan [2017]
Bull Creek & South Grand River	Louisburg Master Trail Plan [2017]
Cedar Creek & Blue River	Olathe Connectivity Plan [2013]
Cedar Creek & Mill Creek [Johnson]	Connect Downtown Olathe [2015]
Cedar Creek, Blue River, Bull Creek & Mill Creek [Johnson]	Olathe Get Active Bike Share Implementation Strategy [2017]
Kansas River	Kaw River Bike/Ped Connector Bridge [2017]
Kill Creek	Destination Downtown: a Placemaking and Mobility Enhancement Project [2019]
Kill Creek & Mill Creek [Johnson]	Downtown Olathe Active Transportation Connectivity Plan [2019]
Mill Creek [Johnson] & Blue River	A New Look at Old Town Lenexa [2015]
Mill Creek [Johnson], Blue River & Turkey Creek	Quivira Road Corridor Plan
Mill Creek [Johnson] & Turkey Creek	RE-Imagine 75th: A Pedestrian, Streetscape and Amenity Corridor Design Guide [2019]
Missouri River	Burlington Corridor Complete Street [2015]
Missouri River	Armour Road Complete Street Plan [2017]
Missouri River	3 <sup>rd</sup> & Grand Transportation Hub [2013]
Missouri River, Line Creek, Rock Creek, Shoal Creek	North Oak Complete Streets [2019]
Missouri River & Rock Creek	North Kansas City Bike Master Plan [2019]
Mud Creek, Stranger Creek, Salt Creek, Threemile Creek, Fivemile Creek, Sevenmile Creek	Leavenworth Transit Plan [2017]
Platte River	Route 92 Corridor Study [2015]
Rush Creek, Line Creek & Missouri River	Route 9 Corridor Study [2015]
Rush Creek	Parkville Downtown Master Plan [2015]
Shoal Creek	US 69/Pleasant Valley Road Plan [2013]
Sni-a-bar Creek	Main Street – Tamsey Road Plan [2013]
Turkey Creek	Nieman Road – Community Connections [2013]
Turkey Creek	Linking Historic Shawnee [2015]
Turkey Creek	Reconnect Westside Plan [2013]
Turkey Creek	Rosedale University Town District: Fisher Park Activity Center & TOD Hub Plan [2017]
Turkey Creek	Shawnee Mission Parkway Corridor Plan [2013]
Turkey Creek	West 31 <sup>st</sup> Street Corridor [2019]
Wolf Creek, Mission Creek, Mill Creek (Wyandotte), Muncie Creek, & Kansas River	Tri-City Multi-modal Redevelopment Plan [2015]